

The SIFER Reader add-on kit allows an EliteX or PrismaX Keypad to be fitted with an internal Multi-format SIFER Reader allowing user operations that require a SIFER credential.

The kit can be fitted to any EliteX or PrismaX Keypad with an Integrati, Infniti or Infniti Class 5 ISC/IAC as the host controller.

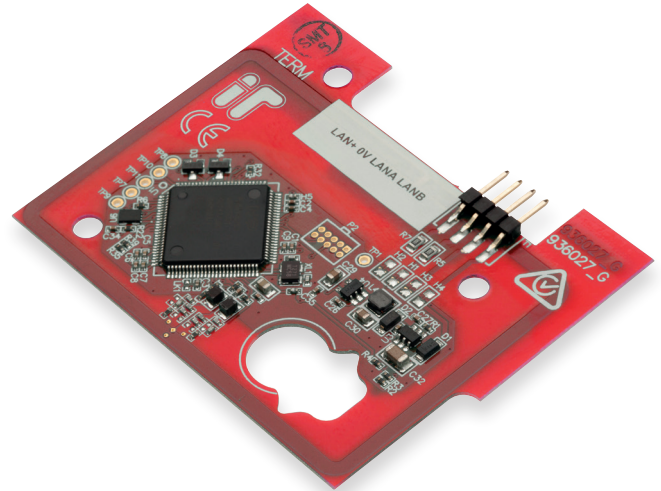
For Inception systems, the SIFER Reader add-on kit can be used with EliteX Keypads.

With the SIFER Reader add-on kit fitted, EliteX or PrismaX keypads can be used as a combined card reader and keypad to achieve "single" or "dual credential" high security authentication.

Applications for the EliteX/PrismaX with the SIFER add-on kit include:

- Card only or Card & PIN access control for doors
- Card only or Card & PIN access to the keypad menus and operations
- Security area Arm & Disarm (Including 3-badge arming)
- Can be used with standard SIFER Readers for In & Out access control

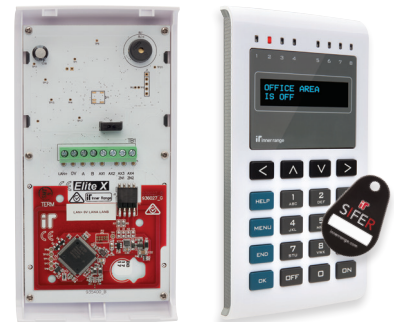
Additionally, the built-in SIFER Reader can be used as a general purpose reader in conjunction with other functions of the system. As an example, the reader can be used with time on site reporting or as a credential based control point to start or stop automated actions.



Features

- Quick and easy to add to any EliteX or PrismaX Keypad
- Support for all types of SIFER credentials
- Multi-format reader compatible with 13.56Mhz cards(CSN Only)
- Support for Card access control
- Support for Card & PIN access control
- Support for Card only keypad login
- Support for Card & PIN keypad login

SIFER Add-on kit shown fitted to an EliteX Keypad



Specifications

Physical

Installation Environment: 0° to 50°C @ 15% to 85% relative humidity (non-condensing)

Electrical

Input Voltage: Powered from host keypad

Operational Current : Up to 60mA in addition to the current already drawn by the keypad

Compatibility

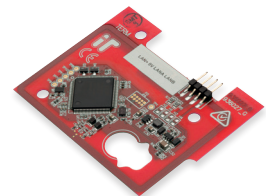
	EliteX	PrismaX
Integrati/Infniti Controller:	V17.0.1	V18.1
Inception Controller:	V1.3.5	Not Supported

Compliance

Electrical  

Environmental:  

Ordering Options



994721PCB&K
SIFER Reader Add-on Kit for EliteX or PrismaX Keypads
(Multi-format enabled)

APRIL 2018 The specifications and descriptions of products and services contained in this datasheet are correct at the time of publishing. Inner Range reserves the right to change specifications or withdraw products without notice.